

Update on the 2022 Integrated Report (IR) and Plans for Developing the 2024 IR

Surface Water Quality Assessment Advisory Workgroup

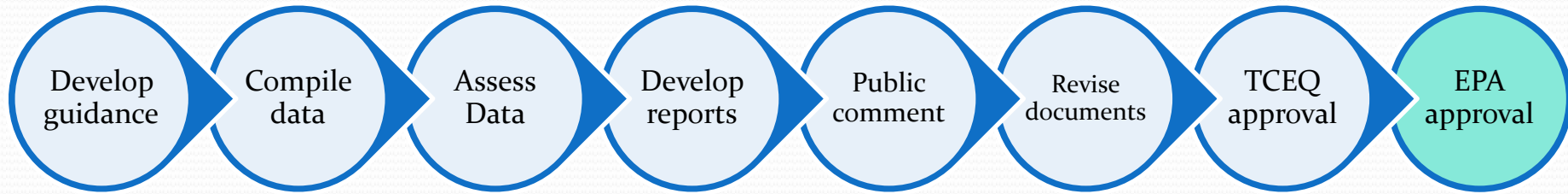
Surface Water Quality Monitoring Program (SWQM)

October 26, 2022

Background

- Statewide assessment of the status of state waters
 - Compares water quality data to approved water quality standards
 - Identifies impaired waters (303(d) List)
- Requirements
 - Federal Clean Water Act, Sections 305(b) and 303(d)
 - Title 30 of the Texas Administrative Code (30 TAC)
- Conducted every two years
 - Draft due to EPA on April 1 of even numbered years

Integrated Report – Process



2022 Integrated Report

- Guidance Advisory Workgroup – Nov 17, 2020
- Public Comment Period
 - January 28, 2022 - March 1, 2022
- TCEQ Adoption – June 1, 2022
- EPA Approval – July 7, 2022

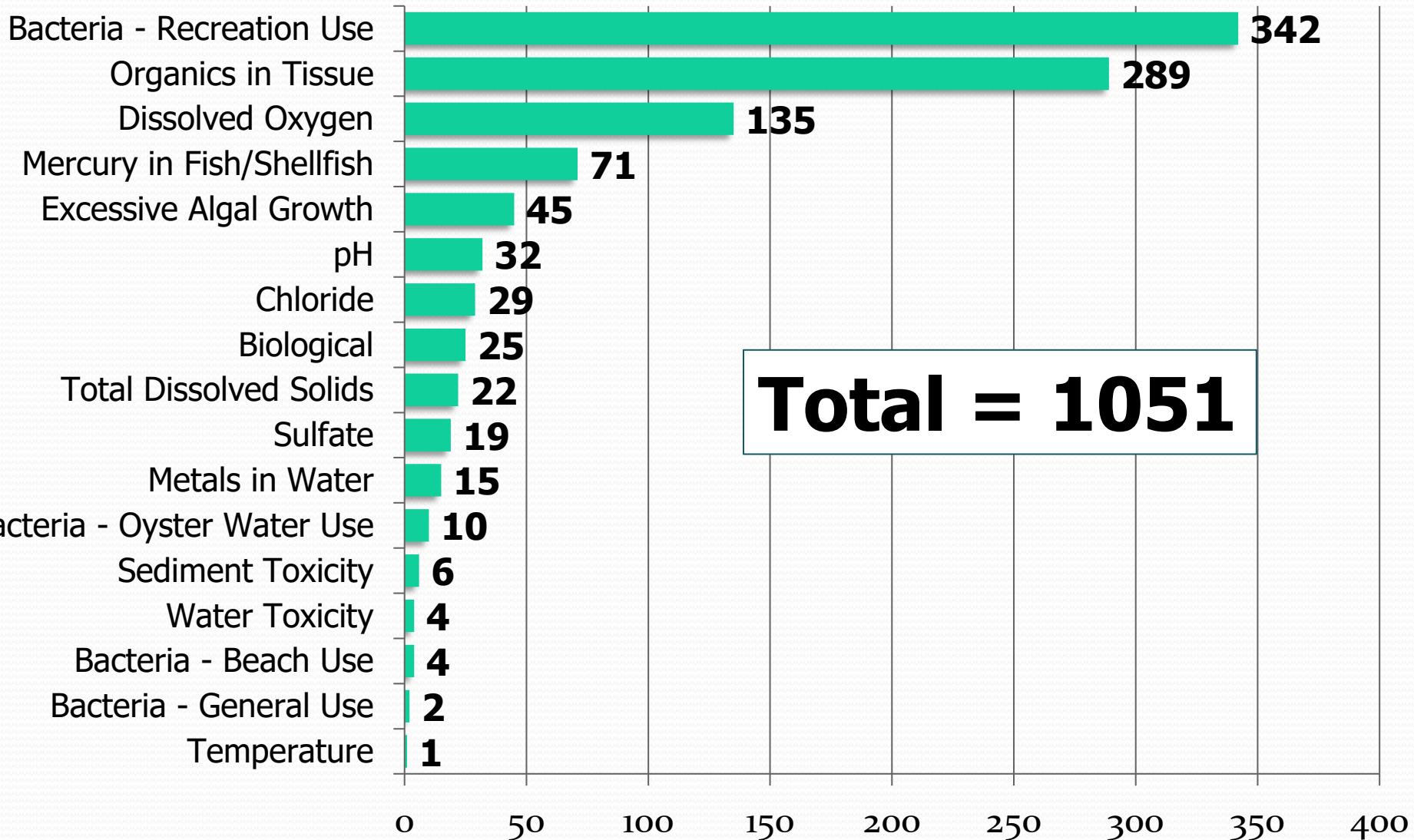
Draft 2022 Integrated Report Updates

- Reservoir Nutrient Assessments - Category 5n
 - Water body does not meet its applicable *Chl-a* criterion
 - Additional information from causal nutrient parameters or impacts to response variables corroborates the exceedance
 - Data and information will be collected before a management strategy (e.g., TMDL, WPP) is selected

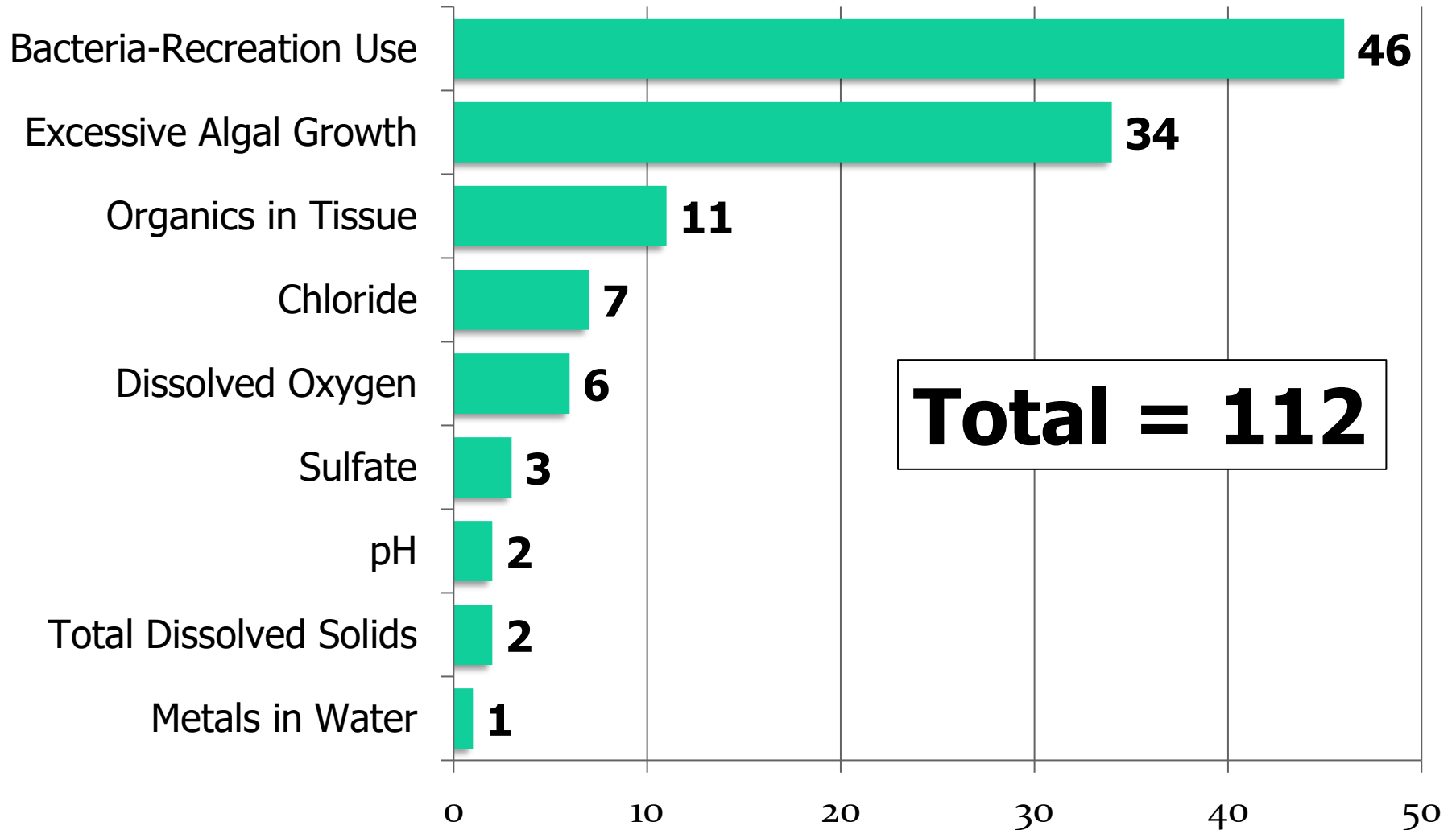


2022 Integrated Report Results

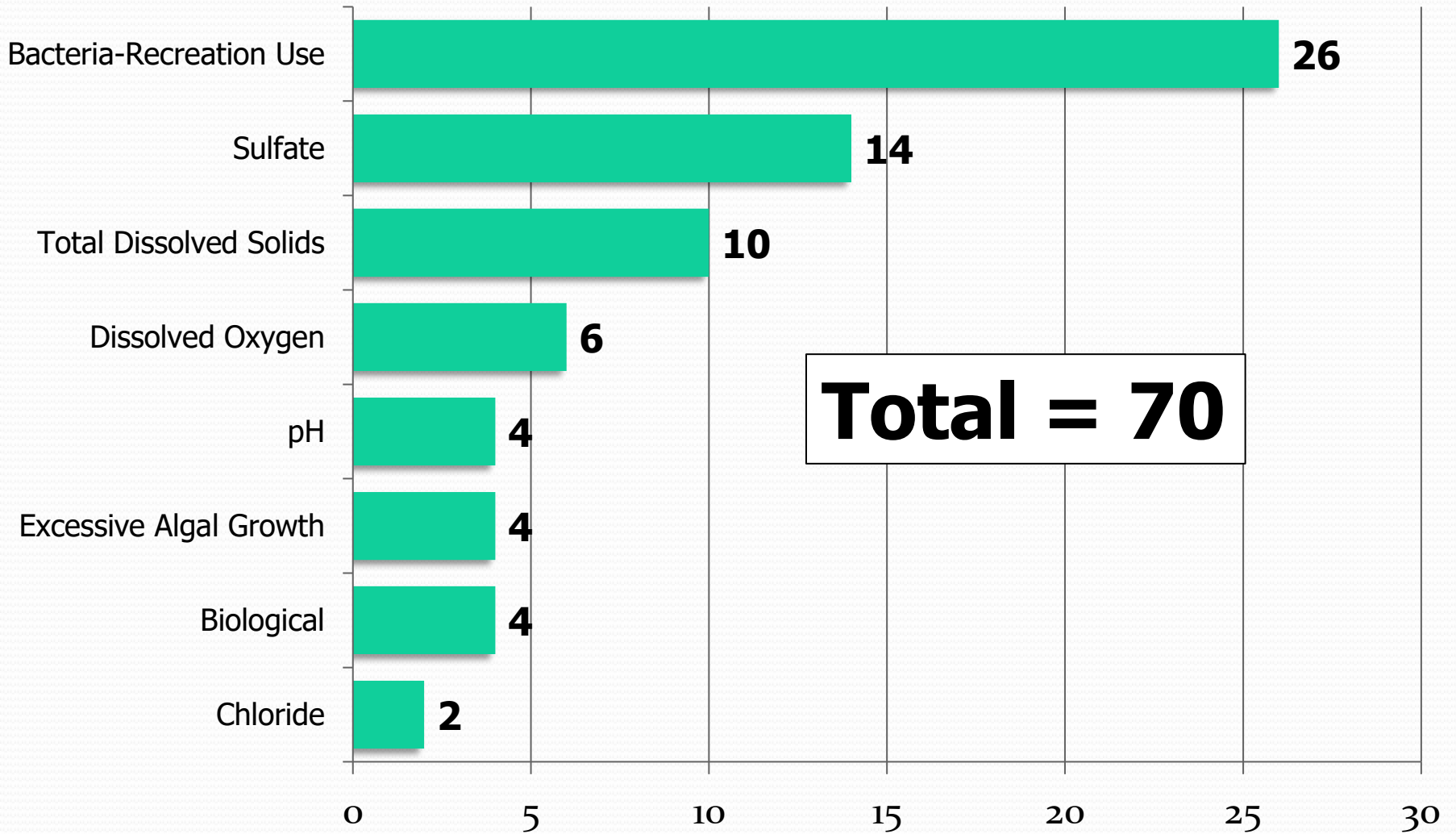
2022 303(d) Listings (Assessment Units)



2022 New Listings (Assessment Units)



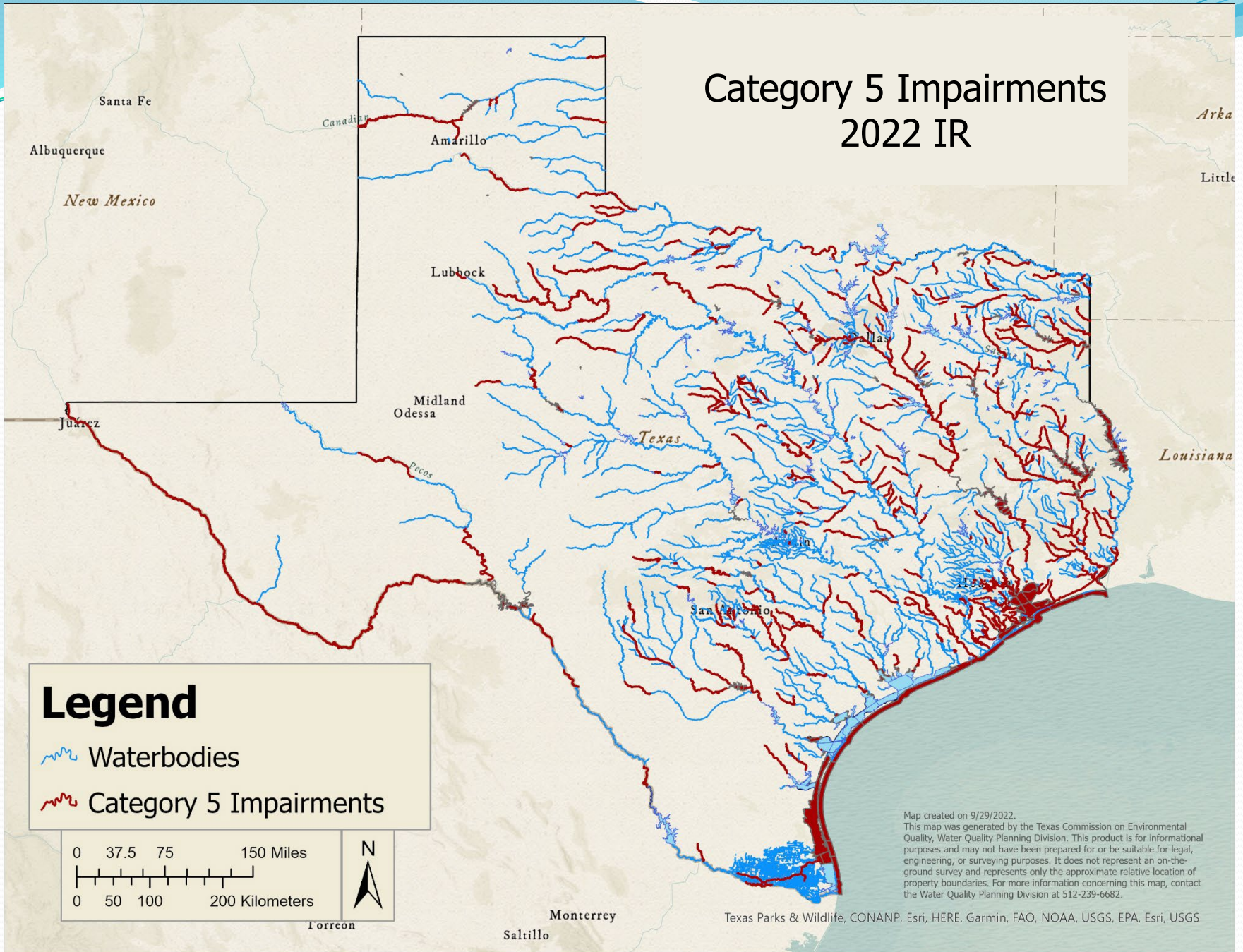
2022 Delistings (Assessment Units)





303(d) List Changes 2020-2022

Parameter	2020 Impairments	2022 Impairments	Change
Excessive Algal Growth	15	45	30
Bacteria – Recreation Use	322	342	20
Organics in Tissue	277	288	11
Chloride	24	29	5
Metals in Water	14	15	1
pH	34	32	-2
Biological	29	25	-4
Total Dissolved Solids	30	22	-8
Sulfate	30	19	-11

Category 5 Impairments 2022 IR



Legend

-  Waterbodies
-  Category 5 Impairments

0 37.5 75 150 Miles

0 50 100 200 Kilometers



Torrcon

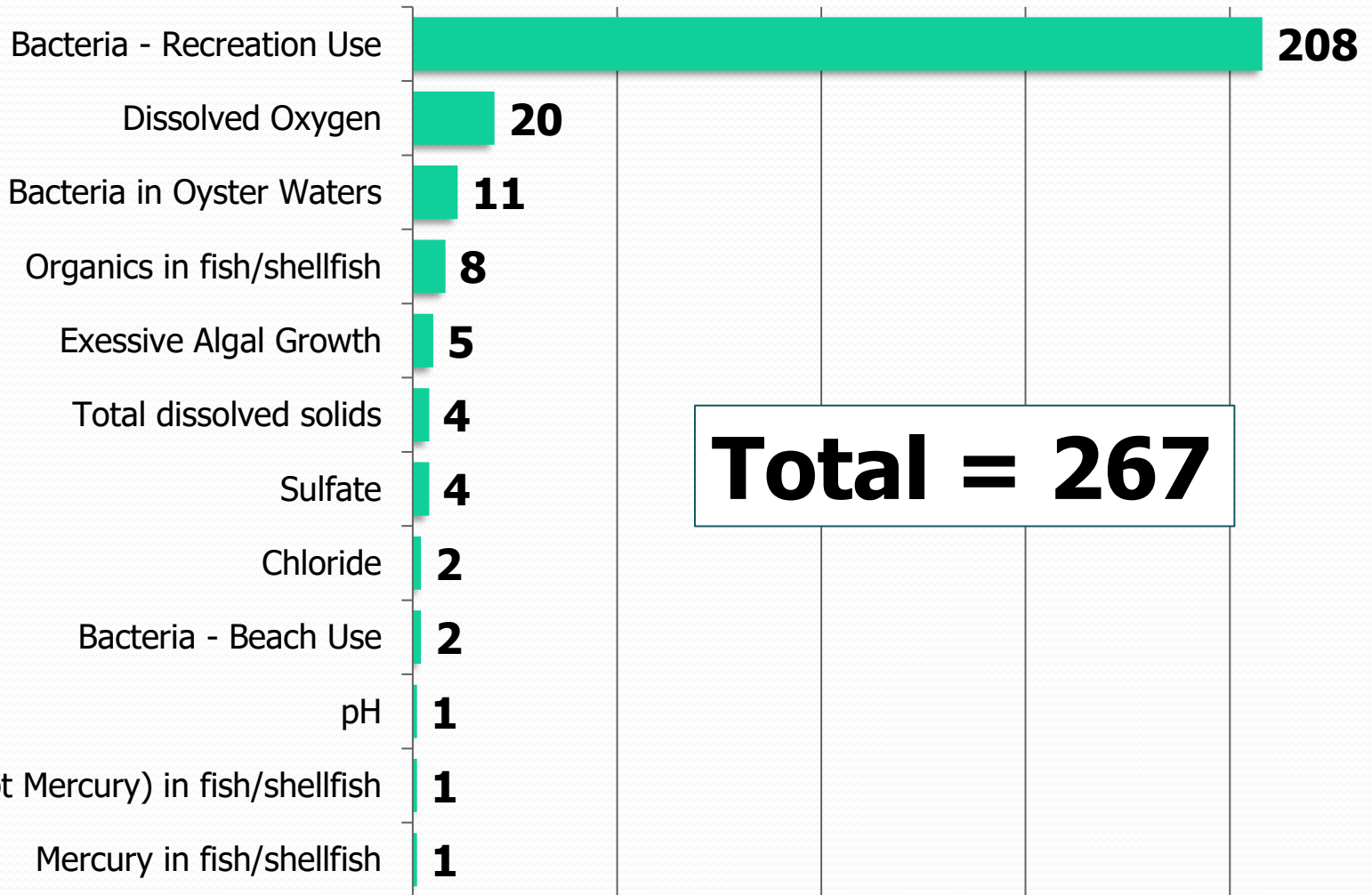
Monterrey

Saltillo

Texas Parks & Wildlife, CONANP, Esri, HERE, Garmin, FAO, NOAA, USGS, EPA, Esri, USGS

Map created on 9/29/2022.
This map was generated by the Texas Commission on Environmental Quality, Water Quality Planning Division. This product is for informational purposes and may not have been prepared for or be suitable for legal, engineering, or surveying purposes. It does not represent an on-the-ground survey and represents only the approximate relative location of property boundaries. For more information concerning this map, contact the Water Quality Planning Division at 512-239-6682.

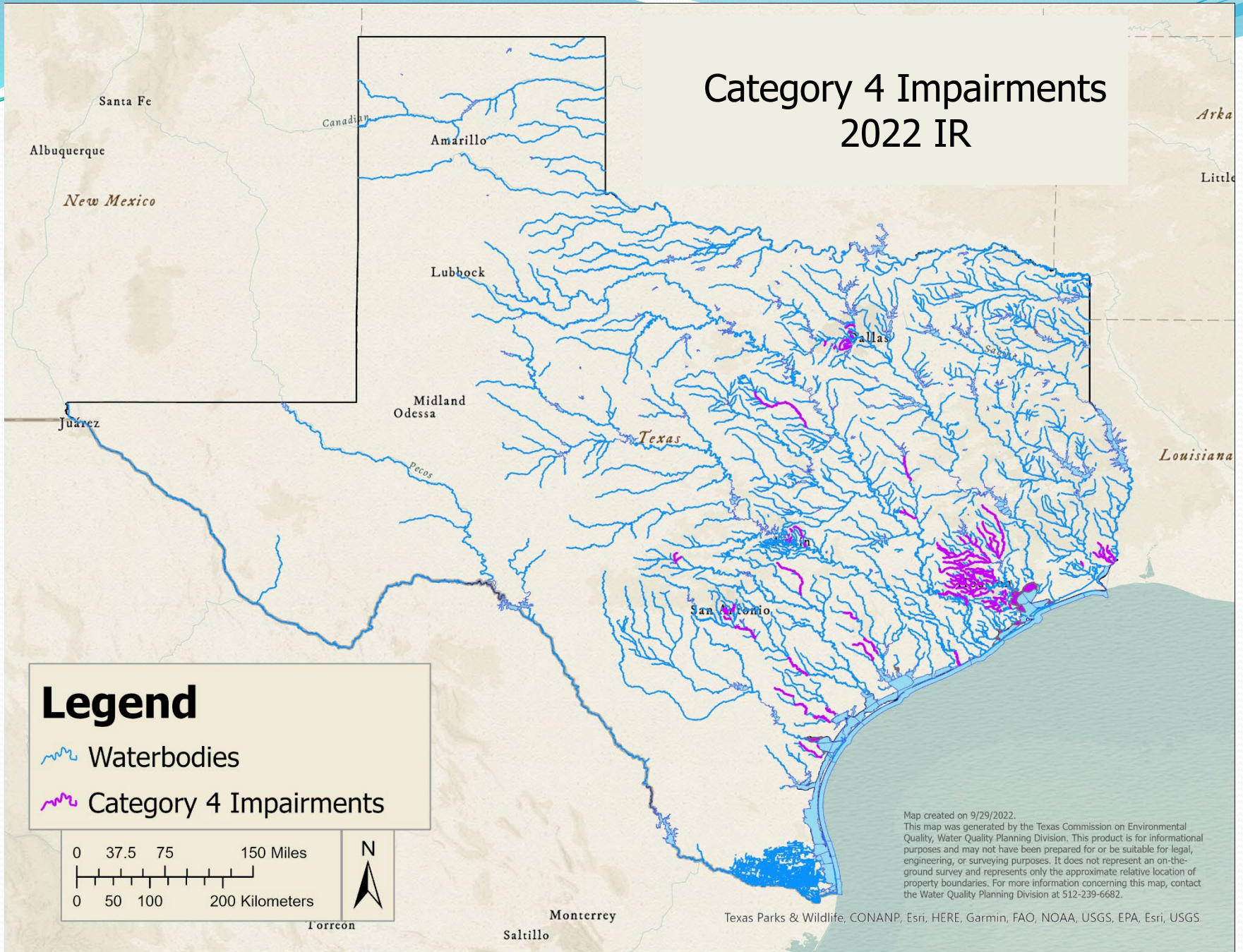
2022 Category 4 Impairments (Assessment Units)





Total = 267

0 50 100 150 200 250

Category 4 Impairments 2022 IR



Legend

-  Waterbodies
-  Category 4 Impairments

0 37.5 75 150 Miles
0 50 100 200 Kilometers



Torrcon

Monterrey
Saltillo

Map created on 9/29/2022.
This map was generated by the Texas Commission on Environmental Quality, Water Quality Planning Division. This product is for informational purposes and may not have been prepared for or be suitable for legal, engineering, or surveying purposes. It does not represent an on-the-ground survey and represents only the approximate relative location of property boundaries. For more information concerning this map, contact the Water Quality Planning Division at 512-239-6682.

Texas Parks & Wildlife, CONANP, Esri, HERE, Garmin, FAO, NOAA, USGS, EPA, Esri, USGS

Draft 2024 Integrated Report

- Advisory Workgroup Meeting - October 2022
- Assess Data – Summer 2023
- Public Comment – Fall 2023
- TCEQ Agenda – Spring 2024

Additional Information

- 2022 Integrated Report
 - <https://www.tceq.texas.gov/waterquality/assessment/22twqi/22txir>
- Andrew Sullivan, SWQM Team
 - Andrew.Sullivan@tceq.texas.gov
 - (512) 239-4587